

**TEST REPORT**

**Report No:** AR-22-SV-025650-02  
**Customer:** CSC STEEL SDN. BHD.  
**Date of Issue:** 25/07/2022



**Batch No:** EUMYBM-00112155  
**Sample No:** 138-2022-06004325

**To:** CSC STEEL SDN. BHD.  
 180, Kawasan Industri Ayer Keroh,  
 Ayer Keroh,  
 75450 Melaka  
 MALAYSIA

**Attn:** Ms. Chee Sook Jin

**Date Sample Received:** 22/06/2022  
**Date of Testing:** 23/06/2022 to 21/07/2022

**The following sample was identified by the customer as:**

SAMPLE DESCRIPTION: REALCOLOR® SUPREME  
 SAMPLE ID: JX900521

**Test Result(s):**

Analysis	Industrial Products Analysis	Unit	Result	LOQ	Test Method	Specification
SVK51	Cadmium (Cd)	mg/kg	<LOQ	1	IEC 62321-5	≤100mg/kg
SVL03	Lead (Pb)	mg/kg	<LOQ	10	IEC 62321-5	≤1000mg/kg
SVK82	Mercury (Hg)	mg/kg	<LOQ	5	IEC 62321-4	≤1000mg/kg
SVT92	Hexavalent Chromium (Cr6+)	µg/cm <sup>2</sup>	0.32	-	IEC 62321-7-1	-
SVK16	<b>Polybrominated Biphenyl (PBBs)</b>				IEC 62321-6	
	Monobromo biphenyl	mg/kg	<LOQ	20		Refer Note 2
	Dibromo biphenyl	mg/kg	<LOQ	20		Refer Note 2
	Tribromo biphenyl	mg/kg	<LOQ	20		Refer Note 2
	Tetrabromo biphenyl	mg/kg	<LOQ	20		Refer Note 2
	Pentabromo biphenyl	mg/kg	<LOQ	20		Refer Note 2
	Hexabromo biphenyl	mg/kg	<LOQ	20		Refer Note 2
	Heptabromo biphenyl	mg/kg	<LOQ	20		Refer Note 2
	Octabromo biphenyl	mg/kg	<LOQ	20		Refer Note 2
	Nonabromo biphenyl	mg/kg	<LOQ	20		Refer Note 2
	Decabromo biphenyl	mg/kg	<LOQ	20		Refer Note 2
	Sum Polybrominated Biphenyls (PBBs)	mg/kg	<LOQ	20		≤1000mg/kg
SVK17	<b>Polybrominated Diphenyl Ether (PBDEs)</b>				IEC 62321-6	
	Monobromo diphenyl ether	mg/kg	<LOQ	20		Refer Note 2
	Dibromo diphenyl ether	mg/kg	<LOQ	20		Refer Note 2
	Tribromo diphenyl ether	mg/kg	<LOQ	20		Refer Note 2
	Tetrabromo diphenyl ether	mg/kg	<LOQ	20		Refer Note 2
	Pentabromo diphenyl ether	mg/kg	<LOQ	20		Refer Note 2
	Hexabromo diphenyl ether	mg/kg	<LOQ	20		Refer Note 2
	Heptabromo diphenyl ether	mg/kg	<LOQ	20		Refer Note 2

**TEST REPORT**

Page No: 2/3

**Report No:** AR-22-SV-025650-02  
**Customer:** CSC STEEL SDN. BHD.  
**Date of Issue:** 25/07/2022



**Batch No:** EUMYBM-00112155  
**Sample No:** 138-2022-06004325

Analysis	Industrial Products Analysis	Unit	Result	LOQ	Test Method	Specification
	Octabromo diphenyl ether	mg/kg	<LOQ	20		Refer Note 2
	Nonabromo diphenyl ether	mg/kg	<LOQ	20		Refer Note 2
	Decabromo diphenyl ether	mg/kg	<LOQ	20		Refer Note 2
	Sum Polybrominated Diphenyl Ethers (PBDEs)	mg/kg	<LOQ	20		≤1000mg/kg
SVV1Q	<b>Phthalates</b>				IEC 62321-8	
	Benzyl butyl phthalate (BBP)	% (w/w)	<LOQ	0.02		≤0.1%
	Bis(2-ethylhexyl)phthalate (DEHP)	% (w/w)	<LOQ	0.02		≤0.1%
	Dibutyl phthalate (DBP)	% (w/w)	<LOQ	0.02		≤0.1%
	Di-isobutyl phthalate (DiBP)	% (w/w)	<LOQ	0.02		≤0.1%

**Specification Note**

- RoHS Directive 2011/65/EU and (EU) 2015/863 (amendment in Annex II)
- Based on sum amount of PBB/PBDE limit, which is ≤1000mg/kg

**Remark**

- Limit of quantification (LOQ) for Hexavalent Chromium (Cr6+) = 0.10 µg/cm<sup>2</sup>
- The test portion was totally dissolved for cadmium, lead & mercury test by using pre-conditioning method as mentioned above.
- IEC 62321 flowchart can be obtained from <https://admin.apac-websites.eurofins.com/media/606192/efctm001-issue-2.pdf>

**Version Remark(s):**

- Analytical Report AR-22-SV-025650-02 issued on 25/07/2022 will supersede previous version of report(s). Upon receipt of this revised copy, all earlier version of report(s) will be invalid immediately.

This 3 page(s) of report and its attachment(s), if relevant, has/have been validated by



ChM. Ong Sheue Fen, *B. Sc (Hons) Industrial Chemistry*  
 IKM Registered Chemist  
 Registered No.:M/2864/5629/09

**TEST REPORT**

**Report No:** AR-22-SV-025650-02  
**Customer:** CSC STEEL SDN. BHD.  
**Date of Issue:** 25/07/2022



**Batch No:** EUMYBM-00112155  
**Sample No:** 138-2022-06004325

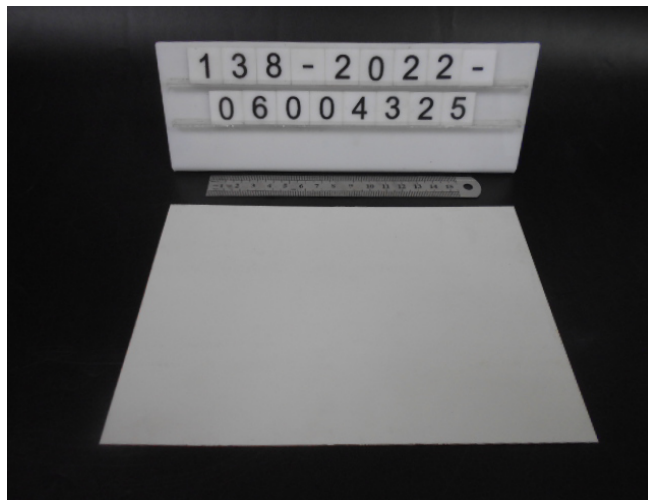
**EXPLANATORY NOTE**

This analytical report shall not be reproduced except in full, without approval of Eurofins NM Laboratory Sdn Bhd.  
 The result(s) relate(s) only to the item(s) tested.  
 Eurofins general terms and conditions of sales (Malaysia) apply.

- ◆ Test result is not accredited.
- Test result is externally provided within Eurofins group and is accredited.
- Test result is externally provided within Eurofins group but is not accredited.
- Test result is externally provided outside Eurofins group and is accredited.
- Test result is externally provided outside Eurofins group but is not accredited.

**N/A** means not applicable.  
**<LOD** means not detected at or below the Limit of Detection (LOD).  
**<LOQ** means below the Limit of Quantification (LOQ).

## Sample Photograph



- End of Report -