

Test Report

No. CTSSA/16130-1/13
CTS Ref. CTSSA/13/2315/CSC

Date : 22/07/2013

Page: 1 of 5

CSC STEEL SDN BHD (228899-P)
180, KAWASAN INDUSTRI AYER KEROH, AYER KEROH
75450 MELAKA, MALAYSIA

The following merchandise was (were) submitted and identified by the client as:

Sample Description : Galvanized product sample
Sample Receiving Date : 16/07/2013
Testing Period : 16/07/2013 to 22/07/2013

Test Requested : Selected test(s) as requested by client
Test Method : Please refer to next page(s).
Test Results : Please refer to next page(s).
Analysts : Ng Jing Wei, Cho Kar Yen, Tan Li Wei & Choong Lap Kit

SGS LABORATORY SERVICES (M) SDN. BHD.



CHONG KIEN LEN
B.Sc.(HONS) AMIC
SENIOR LAB MANAGER

This document is issued by the Company subject to its General Conditions of Service printed overleaf, available on request or accessible at <http://www.sgs.com/en/Terms-and-Conditions.aspx> and, for electronic format documents, subject to Terms and Conditions for Electronic Documents at <http://www.sgs.com/en/Terms-and-Conditions/Terms-e-Documents.aspx>. Attention is drawn to the limitation of liability, indemnification and jurisdiction issues defined therein. Any holder of this document is advised that information contained hereon reflects the Company's findings at the time of its intervention only and within the limits of Client's instructions, if any. The Company's sole responsibility is to its Client and this document does not exonerate parties to a transaction from exercising all their rights and obligations under the transaction documents. This document cannot be reproduced except in full, without prior written approval of the Company. Any unauthorized alteration, forgery or falsification of the content or appearance of this document is unlawful and offenders may be prosecuted to the fullest extent of the law. Unless otherwise stated the results shown in this test report refer only to the sample(s) tested and such sample(s) are retained for three months only.

Test Report

No. CTSSA/16130-1/13
 CTS Ref. CTSSA/13/2315/CSC

Date : 22/07/2013

Page: 2 of 5

Test results:

Test Part Description :

Sample Description : Galvanized product sample

RoHS Directive 2011/65/EU Annex II

Test Item(s):	Unit	Test Method	Results	MDL
Cadmium(Cd)	mg/kg	With reference to EPA Method 3051A, and performed by ICP-OES	N.D.	2
Lead (Pb)	mg/kg	With reference to EPA Method 3051A, and performed by ICP-OES	N.D.	2
Mercury (Hg)	mg/kg	With reference to EPA Method 3051A, and performed by ICP-OES	N.D.	2
Hexavalent Chromium (CrVI)	mg/kg	With reference to JIS H 8625, and performed by UV-VIS Spectrophotometry	53	2
Sum of PBBs	mg/kg	With reference to EPA Method 3540C/3550C, and performed by GC-MS	N.D.	-
Monobromobiphenyl	mg/kg	With reference to EPA Method 3540C/3550C, and performed by GC-MS	N.D.	5
Dibromobiphenyl	mg/kg	With reference to EPA Method 3540C/3550C, and performed by GC-MS	N.D.	5
Tribromobiphenyl	mg/kg	With reference to EPA Method 3540C/3550C, and performed by GC-MS	N.D.	5
Tetrabromobiphenyl	mg/kg	With reference to EPA Method 3540C/3550C, and performed by GC-MS	N.D.	5
Pentabromobiphenyl	mg/kg	With reference to EPA Method 3540C/3550C, and performed by GC-MS	N.D.	5
Hexabromobiphenyl	mg/kg	With reference to EPA Method 3540C/3550C, and performed by GC-MS	N.D.	5
Heptabromobiphenyl	mg/kg	With reference to EPA Method 3540C/3550C, and performed by GC-MS	N.D.	5
Octabromobiphenyl	mg/kg	With reference to EPA Method 3540C/3550C, and performed by GC-MS	N.D.	5
Nonabromobiphenyl	mg/kg	With reference to EPA Method 3540C/3550C, and performed by GC-MS	N.D.	5
Decabromobiphenyl	mg/kg	With reference to EPA Method 3540C/3550C, and performed by GC-MS	N.D.	5

SGS LABORATORY SERVICES (M) SDN. BHD.



CHONG KIEN LEN
 B.Sc.(HONS) AMIC
 SENIOR LAB MANAGER

This document is issued by the Company subject to its General Conditions of Service printed overleaf, available on request or accessible at <http://www.sgs.com/en/Terms-and-Conditions.aspx> and, for electronic format documents, subject to Terms and Conditions for Electronic Documents at <http://www.sgs.com/en/Terms-and-Conditions/Terms-e-Documents.aspx>. Attention is drawn to the limitation of liability, indemnification and jurisdiction issues defined therein. Any holder of this document is advised that information contained hereon reflects the Company's findings at the time of its intervention only and within the limits of Client's instructions, if any. The Company's sole responsibility is to its Client and this document does not exonerate parties to a transaction from exercising all their rights and obligations under the transaction documents. This document cannot be reproduced except in full, without prior written approval of the Company. Any unauthorized alteration, forgery or falsification of the content or appearance of this document is unlawful and offenders may be prosecuted to the fullest extent of the law. Unless otherwise stated the results shown in this test report refer only to the sample(s) tested and such sample(s) are retained for three months only.

Test Report

No. CTSSA/16130-1/13
 CTS Ref. CTSSA/13/2315/CSC

Date : 22/07/2013

Page: 3 of 5

Sum of PBDEs	mg/kg	With reference to EPA Method 3540C/3550C, and performed by GC-MS	N.D.	-
Monobromodiphenyl ether	mg/kg	With reference to EPA Method 3540C/3550C, and performed by GC-MS	N.D.	5
Dibromodiphenyl ether	mg/kg	With reference to EPA Method 3540C/3550C, and performed by GC-MS	N.D.	5
Tribromodiphenyl ether	mg/kg	With reference to EPA Method 3540C/3550C, and performed by GC-MS	N.D.	5
Tetrabromodiphenyl ether	mg/kg	With reference to EPA Method 3540C/3550C, and performed by GC-MS	N.D.	5
Pentabromodiphenyl ether	mg/kg	With reference to EPA Method 3540C/3550C, and performed by GC-MS	N.D.	5
Hexabromodiphenyl ether	mg/kg	With reference to EPA Method 3540C/3550C, and performed by GC-MS	N.D.	5
Heptabromodiphenyl ether	mg/kg	With reference to EPA Method 3540C/3550C, and performed by GC-MS	N.D.	5
Octabromodiphenyl ether	mg/kg	With reference to EPA Method 3540C/3550C, and performed by GC-MS	N.D.	5
Nonabromodiphenyl ether	mg/kg	With reference to EPA Method 3540C/3550C, and performed by GC-MS	N.D.	5
Decabromodiphenyl ether	mg/kg	With reference to EPA Method 3540C/3550C, and performed by GC-MS	N.D.	5

- Note : (a) mg/kg = ppm ; (0.1wt% = 1000ppm)
 (b) N.D. = Not Detected
 (c) MDL = Method Detection Limit
 (d) - = Not regulated
 (e) Cr6+ result based on plating weight given by client

SGS LABORATORY SERVICES (M) SDN. BHD.



CHONG KIEN LEN
 B.Sc.(HONS) AMIC
 SENIOR LAB MANAGER

This document is issued by the Company subject to its General Conditions of Service printed overleaf, available on request or accessible at <http://www.sgs.com/en/Terms-and-Conditions.aspx> and, for electronic format documents, subject to Terms and Conditions for Electronic Documents at <http://www.sgs.com/en/Terms-and-Conditions/Terms-e-Documents.aspx>. Attention is drawn to the limitation of liability, indemnification and jurisdiction issues defined therein. Any holder of this document is advised that information contained hereon reflects the Company's findings at the time of its intervention only and within the limits of Client's instructions, if any. The Company's sole responsibility is to its Client and this document does not exonerate parties to a transaction from exercising all their rights and obligations under the transaction documents. This document cannot be reproduced except in full, without prior written approval of the Company. Any unauthorized alteration, forgery or falsification of the content or appearance of this document is unlawful and offenders may be prosecuted to the fullest extent of the law. Unless otherwise stated the results shown in this test report refer only to the sample(s) tested and such sample(s) are retained for three months only.

Test Report

No. CTSSA/16130-1/13
CTS Ref. CTSSA/13/2315/CSC

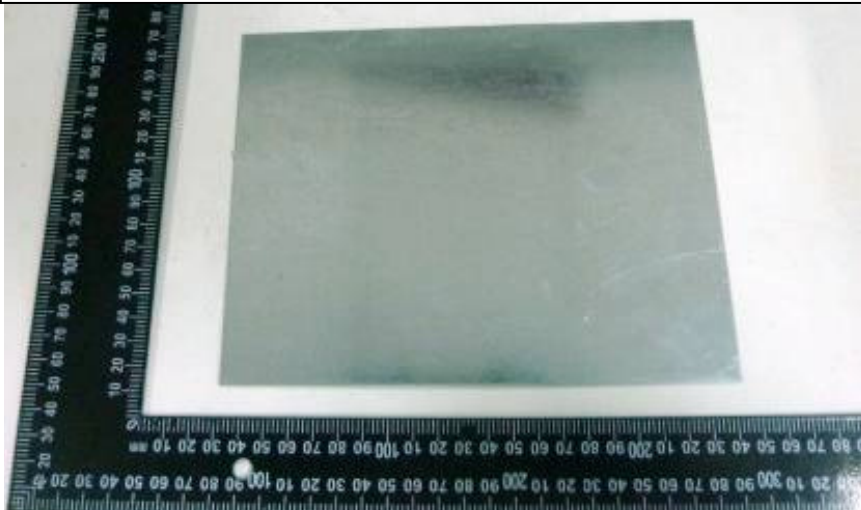
Date : 22/07/2013

Page: 4 of 5

Test Part Description :

Sample Description : Galvanized product sample

CSC STEEL SDN BHD
CTSSA/16130-1/13

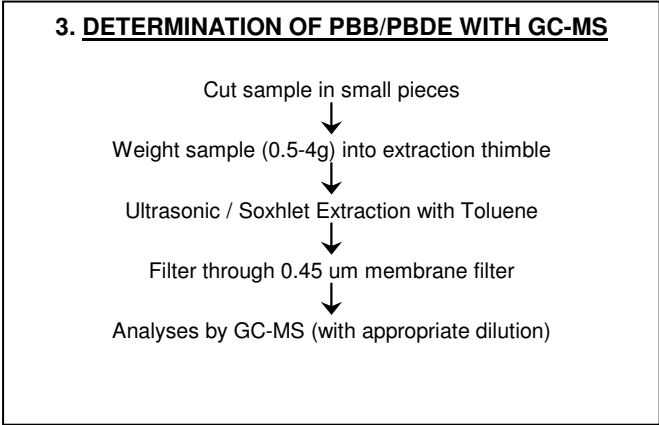
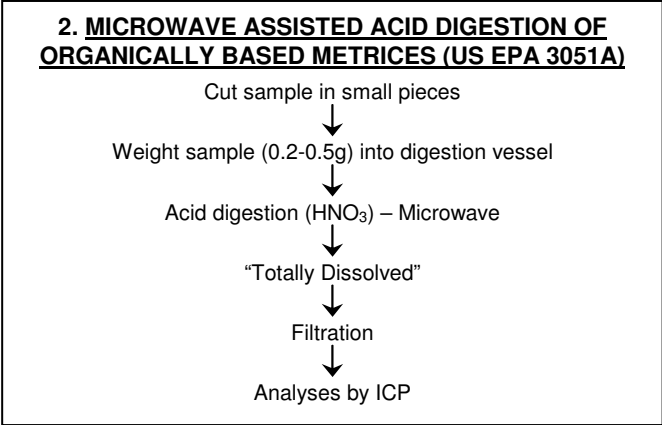
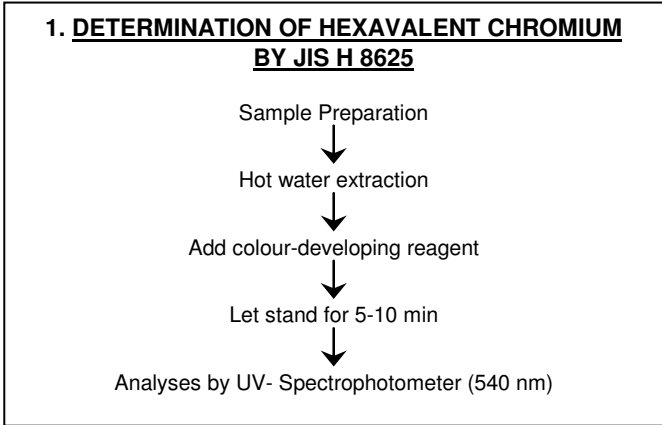


SGS authenticate the photo on original report only

SGS LABORATORY SERVICES (M) SDN. BHD.

CHONG KIEN LEN
B.Sc.(HONS) AMIC
SENIOR LAB MANAGER

This document is issued by the Company subject to its General Conditions of Service printed overleaf, available on request or accessible at <http://www.sgs.com/en/Terms-and-Conditions.aspx> and, for electronic format documents, subject to Terms and Conditions for Electronic Documents at <http://www.sgs.com/en/Terms-and-Conditions/Terms-e-Documents.aspx>. Attention is drawn to the limitation of liability, indemnification and jurisdiction issues defined therein. Any holder of this document is advised that information contained hereon reflects the Company's findings at the time of its intervention only and within the limits of Client's instructions, if any. The Company's sole responsibility is to its Client and this document does not exonerate parties to a transaction from exercising all their rights and obligations under the transaction documents. This document cannot be reproduced except in full, without prior written approval of the Company. Any unauthorized alteration, forgery or falsification of the content or appearance of this document is unlawful and offenders may be prosecuted to the fullest extent of the law. Unless otherwise stated the results shown in this test report refer only to the sample(s) tested and such sample(s) are retained for three months only.



**** End of Report ****

SGS LABORATORY SERVICES (M) SDN. BHD.



CHONG KIEN LEN
 B.Sc.(HONS) AMIC
 SENIOR LAB MANAGER

This document is issued by the Company subject to its General Conditions of Service printed overleaf, available on request or accessible at <http://www.sgs.com/en/Terms-and-Conditions.aspx> and, for electronic format documents, subject to Terms and Conditions for Electronic Documents at <http://www.sgs.com/en/Terms-and-Conditions/Terms-e-Documents.aspx>. Attention is drawn to the limitation of liability, indemnification and jurisdiction issues defined therein. Any holder of this document is advised that information contained hereon reflects the Company's findings at the time of its intervention only and within the limits of Client's instructions, if any. The Company's sole responsibility is to its Client and this document does not exonerate parties to a transaction from exercising all their rights and obligations under the transaction documents. This document cannot be reproduced except in full, without prior written approval of the Company. Any unauthorized alteration, forgery or falsification of the content or appearance of this document is unlawful and offenders may be prosecuted to the fullest extent of the law. Unless otherwise stated the results shown in this test report refer only to the sample(s) tested and such sample(s) are retained for three months only.