

Why realzinc™ HIGIENE is Highly Preferred

The realzinc™ HIGIENE GI sheet is not a paint but a transparent organic resin coating made from unique silver nanoparticles with antimicrobial and anti-fungal properties applied onto the galvanized steel surface.

Rest assured, when engineers or contractors choose to incorporate realzinc™ HIGIENE as a part of your ventilation system, you will experience the following tangible advantages:-



Breathe in healthier, cleaner air

Goodbye bacteria, farewell fungus - realzinc™ HIGIENE GI is certified by the Food Industry Research and Development Institute in compliance with JIS Z 2801 for its efficacy in curbing the growth of eight types of bacteria* as well as certified by SGS in compliance with ASTM G21 for its efficacy in suppressing the growth of five types of fungus*.

Easier maintenance, less cleaning

- ✓ Alkaline resistant
- ✓ Higher white rust resistance
- ✓ Prevents fluting
- ✓ Less blackening

Longer-lasting durability

- ✓ Heat resistant up to 200°C
- ✓ Good humidity resistance
- ✓ Abrasion resistance
- ✓ Corrosion resistance
- ✓ Extra-smooth surface ensures antimicrobial functioning, slows down aging

Contractor-friendly

- ✓ **Anti-fingerprints** solves a common issue during site handling and installation
- ✓ **Post-paintable**

How realzinc™ HIGIENE is Applied

Ventilation system that built with realzinc™ HIGIENE is best suited for various crowd-enabling commercial and industrial settings:

- Healthcare facilities
- Food factories
- Biomedical factories
- Airports
- Shopping malls
- Educational institutions
- Office buildings and others

This antimicrobial coated steel is also highly effective for:



Elevator walls



Button panels



Door panels



Door handles

PRODUCT SPECIFICATIONS

Available coil size	0.4-2.0 X 914-1219 mm
Specification	MS 2660 01/JIS G3302 SGCC/AS 1397 G250/ASTM A653 CS Type A/CS Type B SNI 07 2053 BJ LSD 340
Zinc coating	120, 180, 220, 275g/m2
Spangle	Extra smooth
Coating life span	Indoor: 8-10 years Outdoor: 5-8 years

*Anti-bacterial - (1. Staphylococcus aureus; 2. Acinetobacter baumannii; 3. Salmonella enterica; 4. Pseudomonas aeruginosa; 5. Escherichia coli; 6. Klebsiella pneumoniae; 7. Legionella pneumophila and 8. Penicillium funiculosum)

*Anti-fungal - (1. Aspergillus brasiliensis ATCC 9642; 2. Penicillium funiculosum ATCC 11797; 3. Chaetomium globosum ATCC 6205; 4. Trichoderma virens ATCC 9645; 5. Aureobasidium Pullulans ATCC 15223)



Build, Breathe Better.

Your Invisible Antimicrobial Armour

Ideal solution for cleaner indoor air and to prevent building sickness syndrome.



Breathe easier with strong, yet invisible built protection

Have you ever thought about how the building you are living, working or visiting in could impact your health and wellbeing?

Ventilation is an integral part of a healthy building's environment. It works as the lungs of a building, capturing and filtering polluted elements in the air so you could breathe at ease.

Now, your ventilation can bring you an extra level of protection to improve your indoor air quality (IAQ).

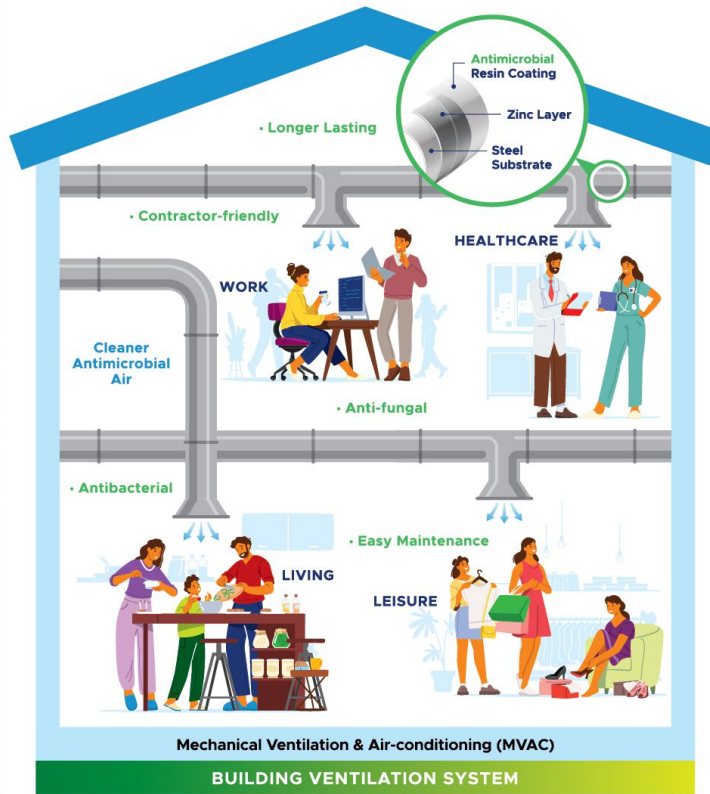
Sick Building Syndrome (SBS)

It's when building occupants experience acute health and comfort effects that appear to be linked to time spent in a building, but no specific illness or cause can be identified.

Top Causes of SBS:

- Inadequate ventilation
- Indoor chemical contaminants (e.g. volatile organic compound - VOCs) and outdoor chemical contaminants
- Biological contaminants (e.g. bacteria, mold, pollen, viruses)

Source: US EPA (Environmental Protection Agency)



Meet realzinc™ HIGIENE – the first ever made-in-Malaysia antimicrobial galvanized iron (GI) sheet

which is specially designed for MVAC. It is the best material for ventilation system to improve your indoor air quality.



About CSC Steel

CSC Malaysia, pioneer of the antimicrobial GI technology is a public listed steel producer that specializes in galvanized steel and colour-coated steel products for the building material industry under our proprietary brand names – realzinc™ and realcolor®. We also produce pickled and oiled-steel coils and cold-rolled steel coils.

Kindly scan for more information:

